

THE HOW

"WASTE TO GREEN"

The Only Proven Way To

Create Sustainable Treescapes



Presented by Howard Gray, GreenBlue Urban



The

Principles



Tree planting in soft

- Sufficient soil volume.



Tree planting in soft

- Sufficient soil volume.
- Top soil to a depth of 300mm.



Tree planting in soft

- Sufficient soil volume.
- Top soil to a depth of 300mm.
- Tree pit should be twice the size of the rootball in diameter.



Tree planting in soft

- Sufficient soil volume.
- Top soil to a depth of 300mm.
- Tree pit should be twice the size of the rootball in diameter.
- Square of circular tree pit?



VS



Tree planting in soft

- Sufficient soil volume.
- Top soil to a depth of 300mm.
- Tree pit should be twice the size of the rootball in diameter.
- Square or circular tree pit?
- Root Barriers to any surface of utility.



Tree planting in hard

- Challenges of maintaining.



Tree planting in hard

- Challenges of maintaining.
- Uncompacted soil under hard paving.



Tree planting in hard

- Challenges of maintaining.
- Uncompacted soil under hard paving.
- Impermeable surfacing.



Tree planting in hard

- Challenges of maintaining.
- Uncompacted soil under hard paving.
- Impermeable surfacing.
- Vehicle damage.



Tree planting in hard

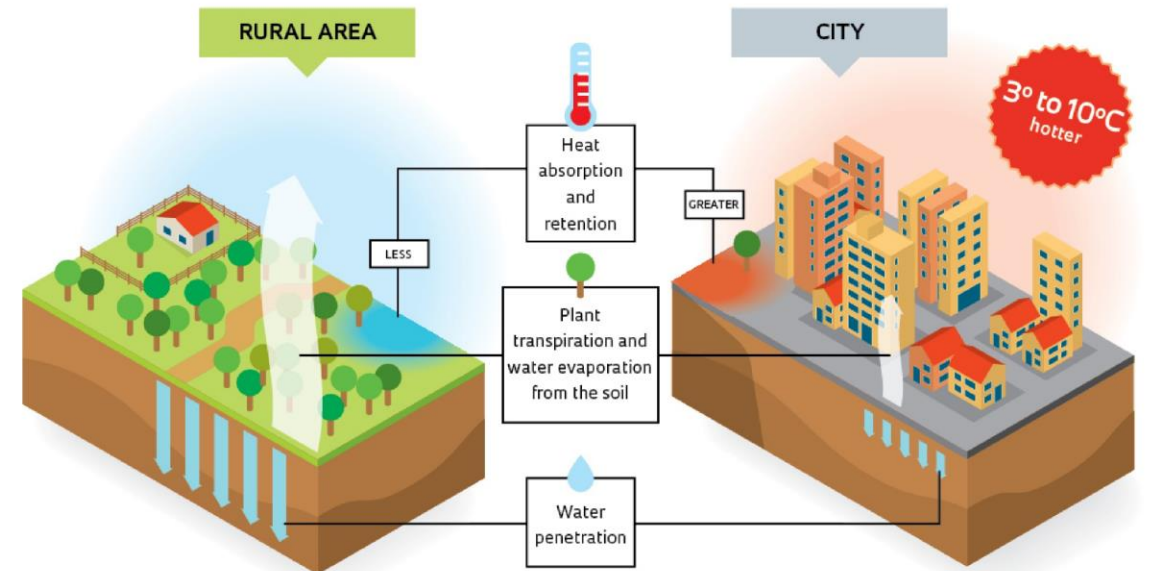
- Challenges of maintaining.
- Uncompacted soil under hard paving.
- Impermeable surfacing.
- Vehicle damage.
- Vandalism.



Tree planting in hard

- Challenges of maintaining.
- Uncompacted soil under hard paving.
- Impermeable surfacing.
- Vehicle damage.
- Vandalism.
- High reflect heat levels.

Why the urban heat island effect occurs

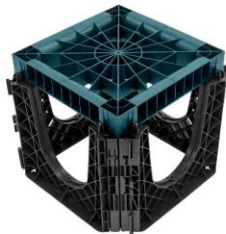


The Solutions:

Soil Cells



RootSpace



RS Ocean



StrataCell



RootCell

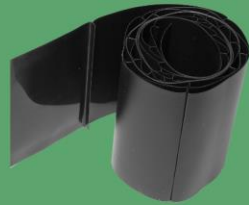


The Solutions:

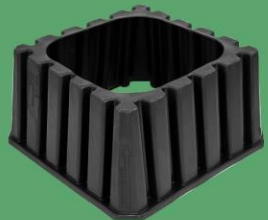
Root Management



RootForm



ReRoot



RootDirector



RootSafe

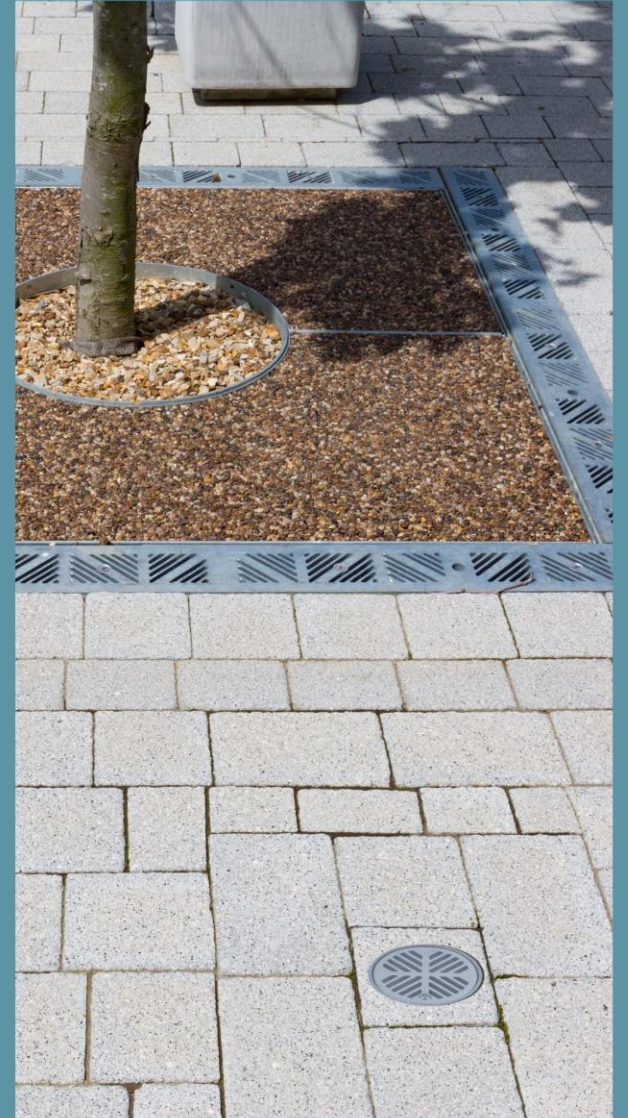


The Solutions:

Aeration



ArborVent & Precinct



The Solutions:

Irrigation



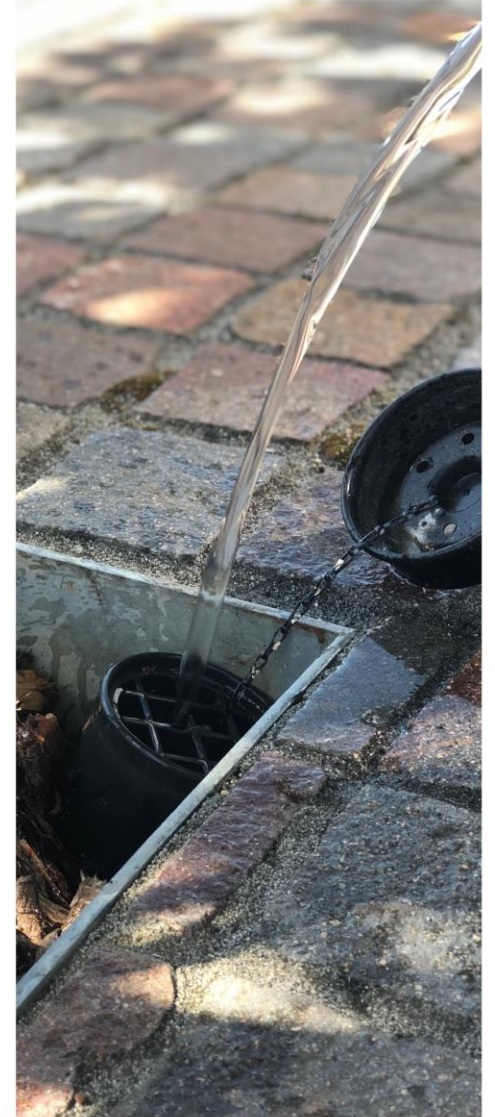
**RootRain
Metro**



**RootRain
Civic**



**RootRain
HydroFort**



The Solutions:

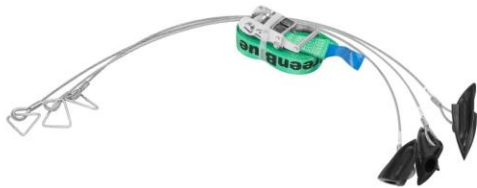
Underground Guying



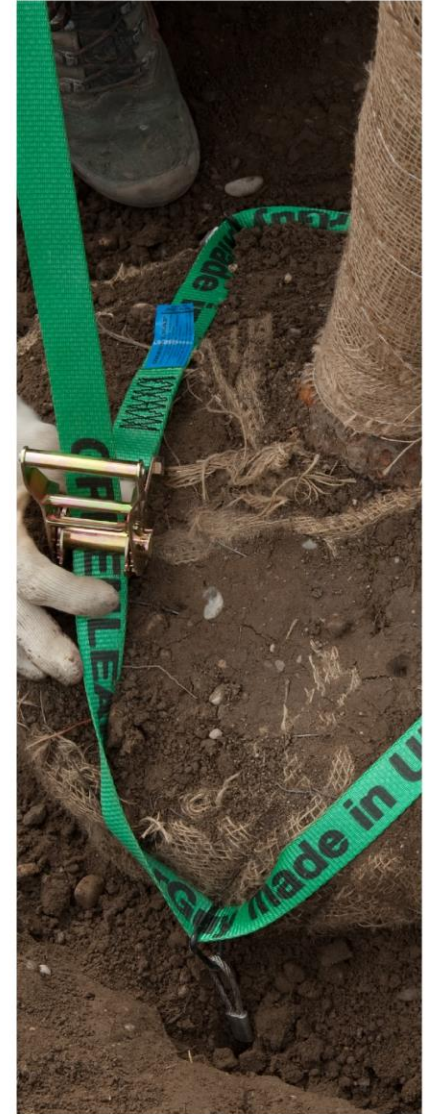
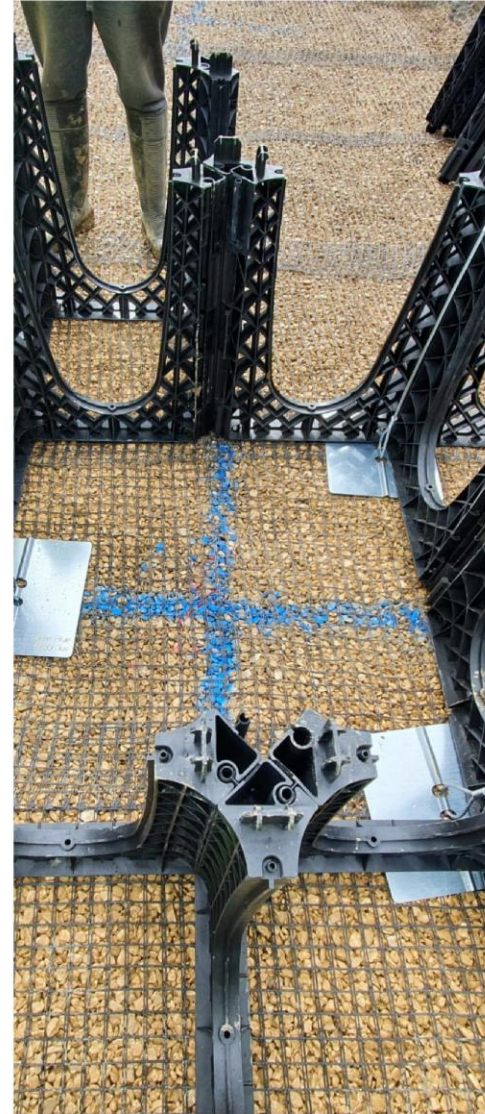
AnchorPlate



Overground



Drive-In Anchor



The Solutions:

Quality soil



RootSoil 20



ArborSoil Hydro MAX





Hadlow Tree Pit Trials

4 years after planting (2018)



Why GreenBlue?

UK Manufacturing from

100% recycled and

recyclable material.





 **MADE IN**[®]
BRITAIN



ArborSystem

The world's only fully

compatible urban tree

planting system

ArborAdvance

Guaranteeing long-term

success with ArborAdvance

tree pit warranty



Approved by local

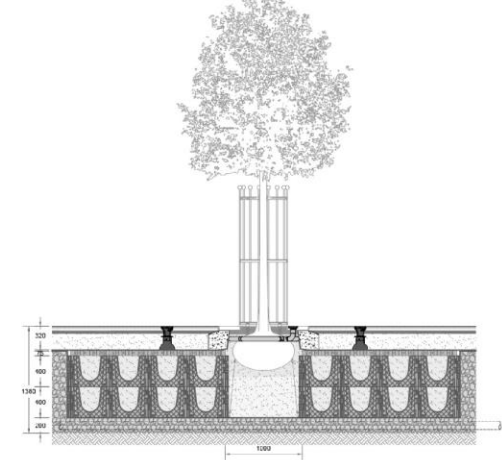
authorities and highways

with BBA approval and

EPD's pending



**Full project support, from
design & specification
through to installation.**



Additional

Benefits



A low-angle, upward-looking photograph of a large, mature tree with a thick, textured trunk and a dense canopy of bright green leaves. The tree is the central focus, with its branches spreading out towards the top of the frame. In the background, modern buildings with large windows and balconies are visible, suggesting an urban setting. The sky is a clear, bright blue. The overall composition is vertical and emphasizes the height and scale of the tree.

The GreenBlue Success Story



Union Terrace, Aberdeen



Dundee, V&A Museum



Edinburgh, St. James

ST JAMES
QUARTER

A wide-angle photograph of a town square in Ayr, Scotland. The central focus is the Cutty Sark Centre, a large, dark stone building with a prominent, tall, ornate spire. The building features arched windows and a clock face on the tower. To the right, there are several multi-story residential buildings with light-colored facades and numerous windows. In the foreground, a paved plaza with a brick pattern is visible, featuring a modern, low-profile bench and a circular stone fire pit. A few people are sitting on a bench near the fire pit. The sky is blue with scattered white clouds. A green banner with white text is overlaid at the bottom of the image.

Ayr, Cutty Sark Centre, High Street



Sauchiehall Street, Glasgow



Quality



Quantity



Canopies for decades need

investment upfront



Care for existing trees but,

maintain successional planting

Be the person to plant trees

that will out live you





**Thank you to
all attendees**

Discover more on [greenblue.com](https://www.greenblue.com)