

Eden Project Dundee

Creating an Eden Project for Scotland



Eden Project | Dundee City Council | University of Dundee | Northwood Charitable Trust

eden
project

New Eden Project will rise from old Dundee gasworks

Planning permission has been granted for a major tourist attraction on the East Dock Street site that will combine horticulture, immersive experiences and the arts



THE COURIER & ADVERTISER Dundee, June 13, 2024 NEWS 7

Council gives go-ahead to transform former gas works into Eden Project

BY LIAM RUTHERFORD, LOCAL DEMOCRACY REPORTER

The £130 million Eden Project in Dundee has been granted planning permission to transform the former gas works on East Dock Street into a major tourist attraction.

The Eden Project Dundee will have three main areas: a 100m x 100m exhibition space, a 100m x 100m rainforest, and a 100m x 100m arts and culture space.

The Eden Project Dundee will have three main areas: a 100m x 100m exhibition space, a 100m x 100m rainforest, and a 100m x 100m arts and culture space.

The Eden Project Dundee will have three main areas: a 100m x 100m exhibition space, a 100m x 100m rainforest, and a 100m x 100m arts and culture space.

Page 30 SCT

Welcome to Eden, Dundee

Green for go: Dundee's former gasworks will be transformed into a nature attraction with wild and cultivated landscapes

A FORMER gasworks will be transformed into a £130million nature attraction after councillors gave the plans the go-ahead. The Eden Project will now create 'an earthworks for the future' in Dundee. The social enterprise charity has previously successfully transformed a disused clay mine in Cornwall into the largest indoor rainforest in the world, welcoming around a million visitors a year. The planned cultural hub in Dundee will 'showcase cultivated and wild landscapes, art installations, performance, science and storytelling across three venues'. The Eden Project added: 'It will be a place to explore our relationship with nature and the ways in which we can work to realise a happy, healthy, regenerative future for people and the planet.'

By Claire Elliott

THE COURIER & ADVERTISER Dundee, June 13, 2024 NEWS 5

Eden Project set for approval

BY LAURA DEVLIN

The Eden Project Dundee will have three main areas: a 100m x 100m exhibition space, a 100m x 100m rainforest, and a 100m x 100m arts and culture space.

The Eden Project Dundee will have three main areas: a 100m x 100m exhibition space, a 100m x 100m rainforest, and a 100m x 100m arts and culture space.

The Eden Project Dundee will have three main areas: a 100m x 100m exhibition space, a 100m x 100m rainforest, and a 100m x 100m arts and culture space.

HortWeek

Eden Project Dundee planning application approved

The decision was made at a meeting of Dundee City Council on Monday 17 June.

Eden Project Dundee set to transform former gasworks after plans approved

Where it all started Eden Project Cornwall





Eden Project Cornwall





The Eden experience is unique

We combine a broad palette of culture and creativity to maximise our ability to engage and inspire all audiences.

Plants are the characters in our stories





Where are we going?

Members of the original team that created the first Eden Project now work within our Experience Development team, creating Eden Projects worldwide.

While the Eden Project Cornwall site acts as a global exemplar to make true change we need to spread our message further afield through partnerships and collaborations to drive the change we see necessary.

One of the key strategic ways we will be doing this is by developing destinations in the UK and around the globe.

Each destination embodies our mission but has a unique theme and design, framed by its location and environmental, social, and economic context.

All sites showcase transformation and aim to inspire, communicate and demonstrate ways we can build a better future.



Eden Project Dundee



Eden Project Morecambe



Terra Pavilion Dubai



Eden Project Qingdao

Creating an Eden Project for Scotland



Project Objectives



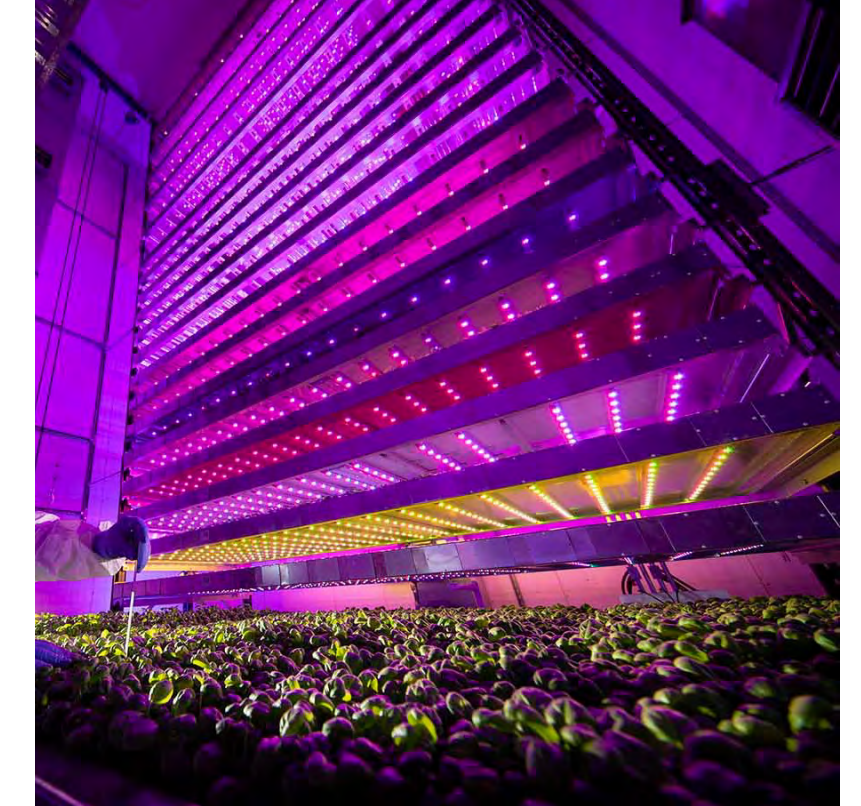
Develop
Partnerships



Improve Health
&
Wellbeing



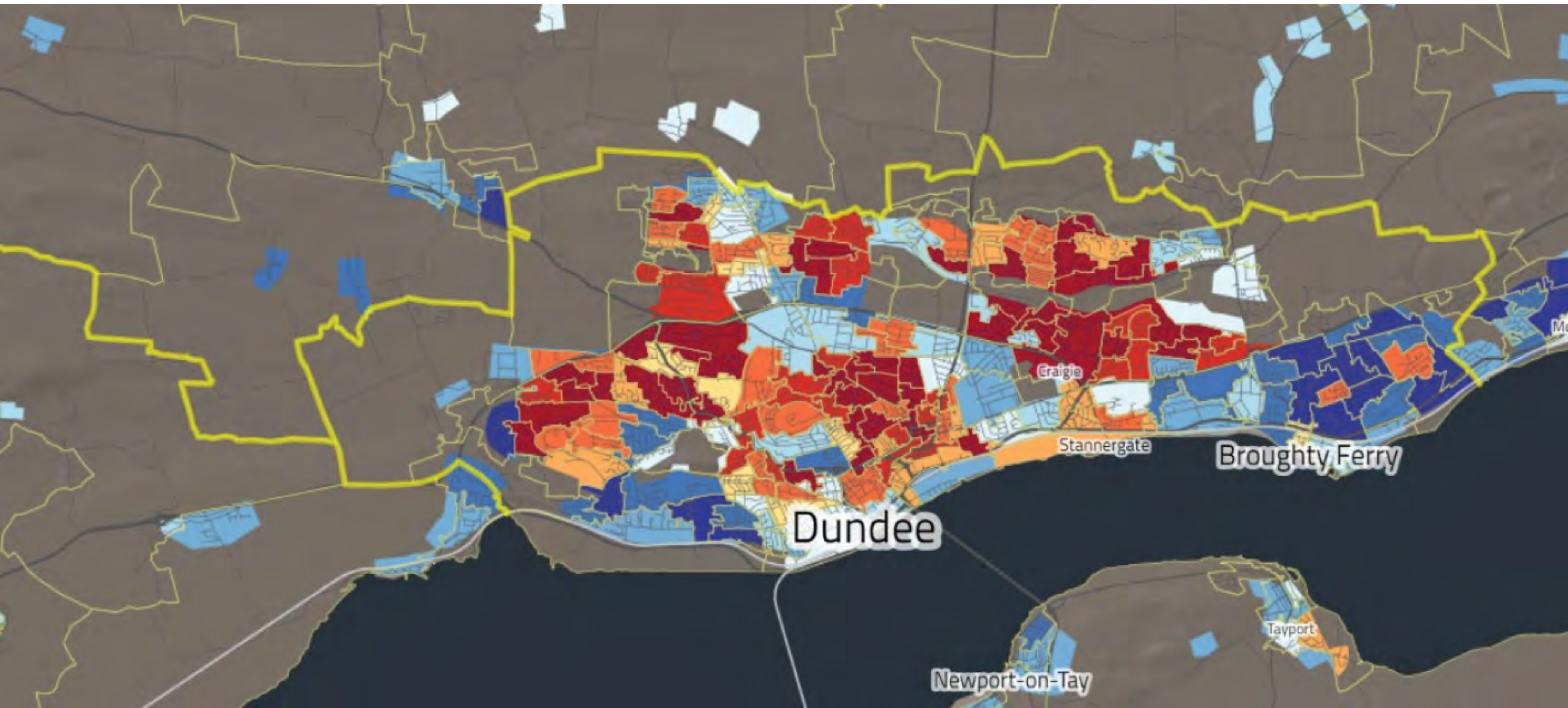
Engage
Disadvantaged
Communities



Learning &
Innovation
Opportunities

Ambition and Impact





...and to make connections



PARTNERSHIPS IN NUMBERS



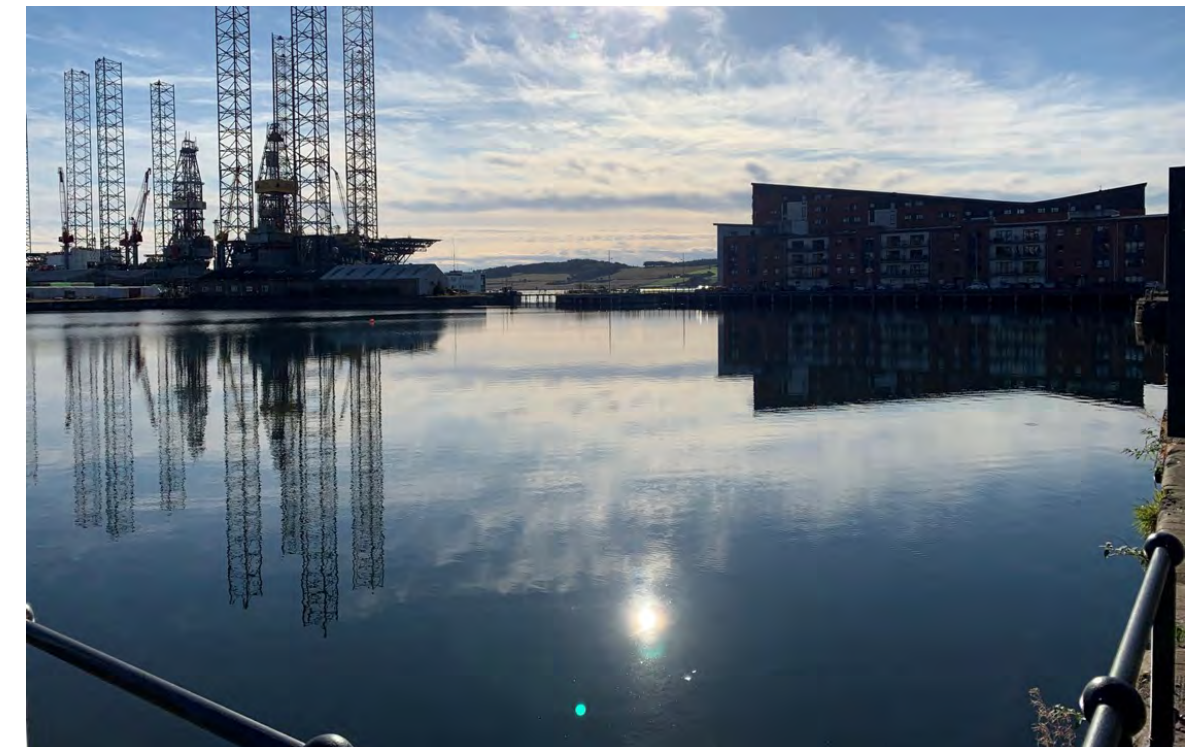
The Dundee Site





The Site Today

- 5.2 ha (12.8 acres)
- Football pitch @ 0.714ha (105m x 68m)
- Gasworks site = 7.28 football pitches!
- 12m change in elevation from north edge to dock
- Gasholder 62m in diameter and 19m in height



The Project



The Earthworks

Eden Project Dundee reimagines the former Gasworks as the “Earthworks”, demonstrating regeneration and showcasing the work of a new collective of Guilds across the city.

The story will be brought to life through **exhibits, performance, learning, play, immersive experiences, world class horticulture, live music, art and food, beverage and retail spaces**, all integrated as essential parts of the overall experience.

3 main venues are surrounded by landscape, showcasing the real-world application of regenerative strategies and ways to reconnect with and learn from nature.



Design work in progress

Global showcase for the Circular Economy & our regenerative future






On arrival, visitors to the Eden Project Dundee are welcomed by an extensive greened structure made from repurposed materials and biodiverse planting – a ‘**Greengate**’ canopy that acts as a way marker to the city and a threshold between the urban and the regenerative site.

The Valve prepares visitors for the journey ahead by beginning the unveiling of the need for regenerative thinking to address the planetary emergency. Constructed from grown materials that are locally sourced, it is the first exemplar regenerative building.




A conceptual rendering of a park area. In the foreground, a gravel path leads to a wooden fence with a chain-link mesh. Behind the fence, a small pond or water course flows through a lush, green landscape with various trees and plants. In the background, a large, curved building with a glass upper section and a brick lower section is visible. The sky is bright and clear. A white circular callout box is positioned in the upper left quadrant, containing text.

The Water Line:
Conceptually defining the edge of the River Tay prior to reclaiming the docklands, this water course manages water flow across the site.

The Gathering Meadows:
A naturalised flexible space
that will be cut through with a
network of paths and spaces or
mown for events.



An architectural rendering of a park. In the foreground, a woman with long dark hair, wearing a grey sweater, is pointing towards a large, circular building in the background. The building has a prominent red facade and a curved, orange-colored roof structure. A pond in the middle ground reflects the building and the surrounding trees. The park is filled with lush greenery, including tall trees and various plants. A paved path winds through the park, and other people are visible in the distance. The sky is a clear, light blue.

Proposals for the **Lush Bunker** challenge the narrative of this former gasholder as an archetypal polluter and carbon container.



This series of meandering, interconnected exhibitions known as **"The Seam"** is built into the southern depth of the gasholder leads visitors on a story through time, from the formation of the earth and the laying down of the coal seam 358 million years ago, to the impacts levelled by human-led extraction and depletion of our natural resources.


A new perimeter viewing deck, "**The Lookout**" is inserted 11m above the existing concrete base, providing radical, innovative ways of experiencing the gasholder volume and views.

From the Look-out, the visitor journey through the Lush Bunker descends downwards into "**The Glade**", a splendid forest-scape with thriving biodiversity made possible by the gasholder's radical remediation and repurposing.


Play:

An integrated play area
in the north east of the
site enjoying and bridging
between the main site level
and the upper platform.






“Venue 3” explores humanity’s relationship to nature: of how we need to learn from science and cultures past and present to understand that we are a part of nature. In doing so it will explore new stories of our place in the world, one underpinned by an enduring cultural shift towards sustainable ways of living and regenerative behaviours.

An architectural rendering of a lush garden. In the foreground, a woman in a blue shirt and a wide-brimmed hat stands on the left. A man and a woman are sitting on a wooden ledge in the middle ground. A large, curved stone wall runs across the middle ground, with a modern building featuring large glass windows behind it. A pond is visible in the lower right, surrounded by a path and various plants. The background shows a city skyline under a clear sky.

The Great Living Wall:
The significant stone wall to the rear of the site offering an excellent south-facing wall for soft fruit and other climbing plants.

An architectural rendering of a forested area. In the foreground, a gravel path leads through a garden with red flowers and yellow flowers. Several people are engaged in various activities: a woman in a hat stands near a basket, a man kneels in a garden bed, and a woman carries a child on her back. In the middle ground, a long, modern pavilion with a wooden facade and a sloped roof is visible. The background shows a hillside with a residential development under a cloudy sky. A large white circle in the upper left contains text.

The Forest:
A developing forested area
demonstrating climate
resilience interspersed with
clearings for a series of
pavilions.

The Bridge:

An opportunity to reconnect the north of the city with the water that has been such an integral part of the city's progress, history and culture while creating a circular loop linking a string of pearls in the form of Dundee's other visitor spots





Thank you

The Eden Project is a charity.
We are ordinary people trying
to change the world. **Join us.**